

Installation Instructions

NappaTile

DO NOT INSTALL UNTIL YOU HAVE READ THE INSTRUCTIONS BELOW

Important Note

- 3M adhesive must be pressed firmly against the wall for 1-2 minutes to activate the adhesive. Not doing so will create a weak bond. Each individual tile within a mosaic must be pushed firmly against the wall surface.
- Tiles can only be applied to a rigid, non-flexible flat surface.
- The surface of the wall must be smooth; 100% of the back of the tile must be in contact for full adhesion.
- The wall must be clean of any dust, debris, moisture or any third party materials.
- Paint must be fully dried before applying tiles.

Prior to Installation

- Unpack the tiles as soon as they arrive. Do not keep in storage for a prolonged period of time.
- Carefully inspect the material. Confirm that the product received is the correct pattern and color. Should you have any questions after inspection, contact your Concertex representative before proceeding any further.
- This product is not recommended for use in areas with direct sunlight or moisture. The product is not guaranteed against fading or color change.
- Tiles cannot be applied to flexible surfaces.
- There may be lot to lot variations in color and shading between a sample and an actual material.
- Do not stack padded mosaics or place heavy objects on padded or regular tiles.

***Note: Claims for labor charges and consequential damages will not be allowed under any condition.**

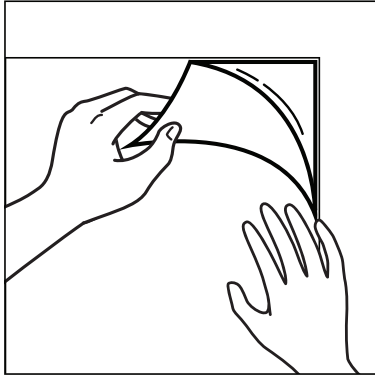
Wall Preparation

- Clean the wall of any dust or debris.
- Remove any loose, flaking paint and old wallcoverings. Tiles are not to be applied on top of previous wallcoverings.
- Fill joints, cracks, and major wall imperfections for a flat, even surface.
- Glossy surfaces must be sanded and primed.
- Paint the wall surface matching the mosaic.
- The paint will mask any peek-through naturally associated with these tiles.
- Paints must be fully dried before applying tiles.
- Please refer to the installation instructions of the primer for the required dry time.
- Take into consideration that dark-coated paints take longer to set.
- Do not use powder-coated paints/primers.
- Sketch lines in pencil on the wall based on the exact measurements of the tiles.
- Each individual tile must be placed on the wall based on the lines drawn to create a straight installation. Do not rely on simply butting tiles together.

Tip: Arrange the tiles on the floor before installing them on the walls.

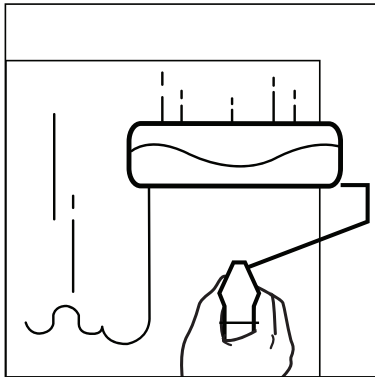
Installation Instructions NappaTile

Installing with 3M Peel & Stick



- Recommended for tiles 12" x 12" and smaller.
- Pre-assorted tiles with peel & stick adhesive can be easily applied directly to the surface. Since peel & stick adhesives are very strong and highly effective, tiles should not be pressed to the surface until it is certain that the ideal placement has been achieved.
- The 3M adhesive must be pressed firmly against the wall for 1-2 minutes to activate the adhesive. Not doing so will create a weak bond.
- Each individual tile must be pressed firmly against the wall.
- The 3M adhesive is a one-time use that should not be applied multiple times.
- If the 3M adhesive touches a surface, a new layer of 3M adhesive must be used.
- The strength of the adhesive deteriorates after each re-positioning or re-application.
- The 3M adhesive must be applied to a clean, rigid, non-flexible, flat surface.
- Any dust, debris, foreign materials, or irregularities on the wall will affect adhesion.
- The 3M adhesive attains the highest adhesion and performance after 72 hours.

Installing with Direct Glue



- Recommended for tiles larger than 12" x 12"
- Individual tiles can be directly glued to the wall using an FRP or panel adhesive.
- Adhere one tile at a time. Only when the tile is completely set should the next tile be placed.
- Extreme care must be taken not to allow adhesive on the tile surface. Any paste left on the surface will discolor the tiles and cause staining or discoloration of the product.

24"x24" and smaller

The recommended glue: Titebond Interior GREENchoice Fast Grab FRP Construction Adhesive

1. Clear the tile of any dust or debris.
2. Using a roller, place an even coating of FRP adhesive onto the wall surface.
3. Next, use the roller to place an even adhesive coating onto the tile's backside.
4. Let the adhesive set on both the wall and backside of the tile for a few minutes until the adhesive has a tacky consistency.
5. Once it is tacky, place the tile onto the wall surface and hold it firmly against it until the adhesive sets.
6. Firmly press all sides of the tile.

Larger than 24"x24"

The recommended glue: Loctite PL Premium Fast Grab Polyurethane Construction Adhesive

1. Clear the tile of any dust or debris.
2. Using a glue gun, place an even distribution of construction adhesive coating onto the tile's backside.
3. Once it is tacky, place the tile into the wall surface and hold it firmly against it until the adhesive sets.
4. Firmly press all sides of the tile.

Installation Instructions

NappaTile

Special Instruction for Drilling, Screwing, Hammering

- Any drilling, screwing, or hammering on top of tiles must be done after the tiles have fully adhered to the wall. 3M adhesive has the highest adhesion after 72 hours.
- Carefully and slowly drill/screw/hammer onto the tile while gripping the tile firmly against the wall. As the base material is made of a natural magnesium oxide board or recycled wood, care must be taken not to crack or shatter the board.
- Power tools can be used but with caution due to the torque generated by the device.

***Note: Any tiles with attempted drilling, screwing and hammering void any claims.**

Care & Maintenance

- General Stain Removal:
 - Faux Leather: Spot cleaning with mild soap and water will remove most of the everyday stains.
 - Faux Suede (Micro-fiber Suede): Use a brush or tape to take any dirt before using any sort of cleaner.
- Tough Stain Removal
 - Since there are mixed patterns and surface qualities in NappaTile, each pattern in the mosaic may use different types of cleaners. Please inquire for detailed recommendation.

Return Policy

- NappaTile is a custom, hand assembled product. Due to the inherent custom nature of NappaTile, all sales are final.
- Please inspect all goods carefully before installing. Only goods with clear manufacturing defects can be returned.
- Under no circumstance can tiles that have been installed on the wall be returned.
- Please refer to Terms of Sale for any warranty, claims or return information.
- Claims for labor charges and consequential damages will not be allowed under any conditions.